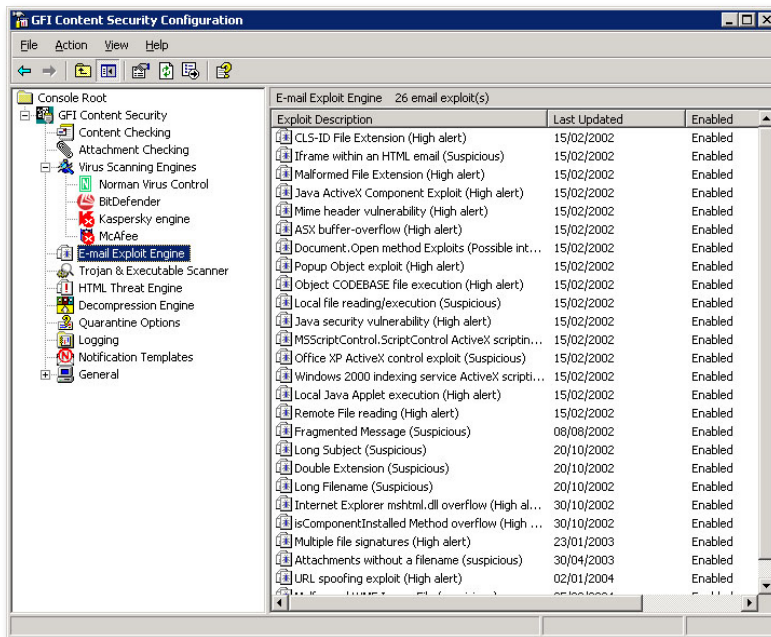


## PRODUCT SPECIFICATION SHEET

## EMAIL FIREWALL FOR MS EXCHANGE



*Protect Your Network from Email Viruses, Trojans and Exploits*

- **Incoming Email Scanned By Four Different Anti-virus Engines**
- **Protect Against network crippling viruses such as MyDoom**
- **Protect Against Email Exploits and Attacks**
- **Stop Dangerous Emails Before They Enter Your Network**

### IN DETAIL ● ● ●

The need to monitor email messages in the workplace for dangerous, offensive or confidential content has never been more evident. Viruses such as the MyDoom worm, distributed via email, are able to cripple your MS Exchange Server and network in minutes. Products that perform single vendor anti-virus scanning do not provide sufficient protection.

At Conquest Wildman we now have the tools to stop dangerous emails at your Exchange Server, before email enters your network system. By scanning the incoming emails through four different anti virus engines, the chances of dangerous emails entering your network can be drastically reduced.

This new system also protects against backdoors (Trojans) and other harmful programs which help potential intruders break into your network, whereas products restricted to a single anti-virus engine will not protect against email exploits and attacks of this kind.

*To safeguard your mail server and network, get Conquest Wildman Email Firewall today.*

**For Conquest Wildman sales call 01234 779 001 or fax your order to 01234 779 002**